

(Mouse) Ubtfl1 Antibody (Center)
Purified Rabbit Polyclonal Antibody (Pab)
Catalog # AP20980a

Specification

(Mouse) Ubtfl1 Antibody (Center) - Product Information

Application	WB,E
Primary Accession	Q3USZ2
Reactivity	Mouse
Host	Rabbit
Clonality	Polyclonal
Isotype	Rabbit IgG
Calculated MW	46131
Antigen Region	186-220

(Mouse) Ubtfl1 Antibody (Center) - Additional Information

Gene ID 546118

Other Names

Upstream-binding factor 1-like protein 1, HMG-box preimplantation embryo-specific protein, HMGP1, Ubtfl1, Hmgpi

Target/Specificity

This Mouse Ubtfl1 antibody is generated from a rabbit immunized with a KLH conjugated synthetic peptide between 186-220 amino acids from the Central region of mouse Ubtfl1.

Dilution

WB~~1:1000

E~~Use at an assay dependent concentration.

Format

Purified polyclonal antibody supplied in PBS with 0.09% (W/V) sodium azide. This antibody is purified through a protein A column, followed by peptide affinity purification.

Storage

Maintain refrigerated at 2-8°C for up to 2 weeks. For long term storage store at -20°C in small aliquots to prevent freeze-thaw cycles.

Precautions

(Mouse) Ubtfl1 Antibody (Center) is for research use only and not for use in diagnostic or therapeutic procedures.

(Mouse) Ubtfl1 Antibody (Center) - Protein Information

Name Ubtfl1 {ECO:0000312|MGI:MGI:3588290}

Function Essential for proliferation of the inner cell mass and trophectodermal cells in

peri-implantation development.

Cellular Location

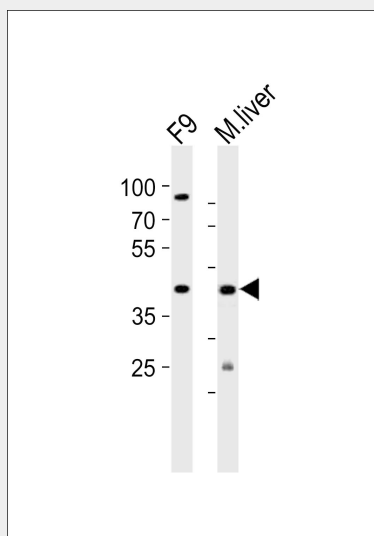
Cytoplasm. Nucleus {ECO:0000255|PROSITE-ProRule:PRU00267, ECO:0000269|PubMed:19915186} Note=Mainly cytoplasmic from the 4-cell stage to the morula stage Becomes nuclear at the blastocyst stage. In ES cells, found in both the nucleus and the cytoplasm.

(Mouse) Ubtfl1 Antibody (Center) - Protocols

Provided below are standard protocols that you may find useful for product applications.

- [Western Blot](#)
- [Blocking Peptides](#)
- [Dot Blot](#)
- [Immunohistochemistry](#)
- [Immunofluorescence](#)
- [Immunoprecipitation](#)
- [Flow Cytometry](#)
- [Cell Culture](#)

(Mouse) Ubtfl1 Antibody (Center) - Images



Western blot analysis of lysates from mouse F9 cell line and mouse liver tissue (from left to right), using (Mouse) Ubtfl1 Antibody (Center)(Cat. #AP20980a). AP20980a was diluted at 1:1000 at each lane. A goat anti-rabbit IgG H&L(HRP) at 1:10000 dilution was used as the secondary antibody. Lysates at 20ug per lane.

(Mouse) Ubtfl1 Antibody (Center) - Background

Essential for proliferation of the inner cell mass and trophectodermal cells in peri-implantation development.

(Mouse) Ubtfl1 Antibody (Center) - References

Carninci P.,et al.Science 309:1559-1563(2005).
Mural R.J.,et al.Submitted (JUL-2005) to the EMBL/GenBank/DDBJ databases.

Yamada M.,et al.Hum. Mol. Genet. 19:480-493(2010).